

DESSO

Essence Elements

Pure, Roots & Traces

CARPET TILES



 Tarkett



CREATIVITY WITH CONFIDENCE

The new DESSO Essence Elements family features three harmonious designs: Pure, Roots and Traces. Each delivers aesthetic excellence at an accessible price point. Together they enable the confident creation of expressive interiors that deliver contemporary colour, soft tactility and long-lasting utility.

EASE OF EXPRESSION

Functional, flexible and durable, the DESSO Essence Elements family can work together in combinations that enable graphic colour blocking or more subtle patterns and zones. Offering ease of expression and effortless creativity, whether you are looking to be vibrant and playful or simply sophisticated, our three designs allow you to be as inventive or pared-back as you wish.

ESSENCE ELEMENTS



1. TRACES 1511
2. PURE 7841
3. PURE 7925
4. PURE 9044
5. ROOTS 5412
6. PURE 1510

PURE, ROOTS & TRACES

TRACES 1511
PURE 1510

THE DESSO ESSENCE ELEMENTS FAMILY



ESSENCE ELEMENTS

The DESSO Essence Elements collection is made up of three complementary and infinitely combinable designs. **Pure** offers serene simplicity with a clean palette of vibrant accents, transitional mid-tones and best-selling neutrals. **Roots** brings unstructured pattern and soft tactility, while **Traces** emphasises depth and adds definition with its subtle organic lines.

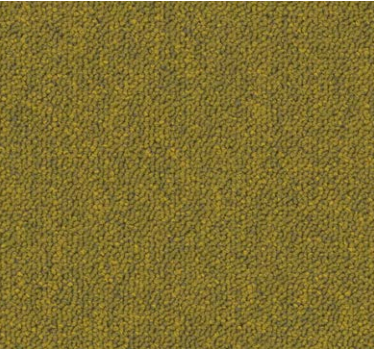
PURE, ROOTS & TRACES

ESSENCE PURE

A palette of vibrant accent colours, transitional mid-tones and best-selling neutrals, providing a wealth of choice for all interiors. Choose from 28 shades — all combinable with Roots and Traces patterned tiles — to create thoughtful, visually-stimulating workplaces.



1. ROOTS 6322
2. PURE 6321
3. PURE 2121
4. PURE 9526
5. PURE 7841
6. ROOTS 9961



ESSENCE ELEMENTS

PURE 6321
PURE 9526
ROOTS 6322

PURE, ROOTS & TRACES

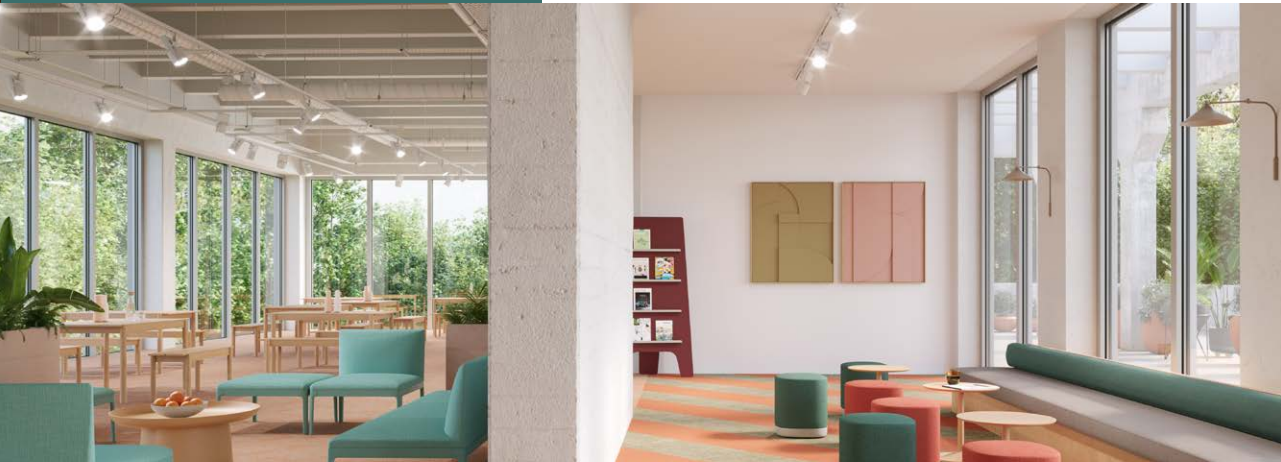
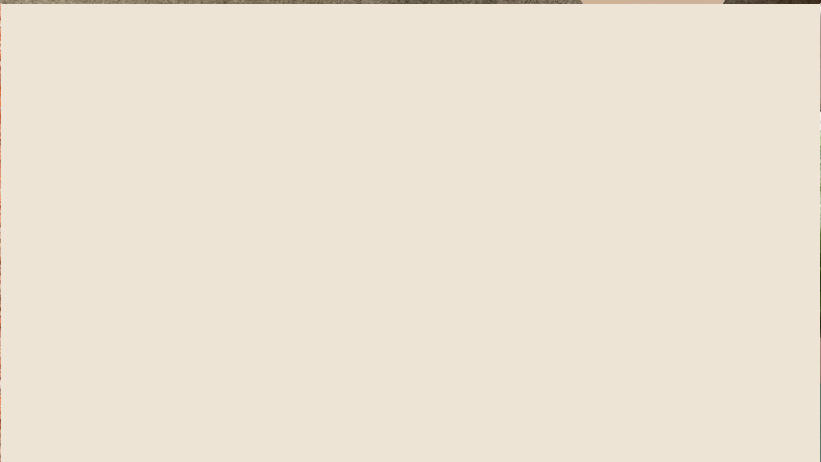
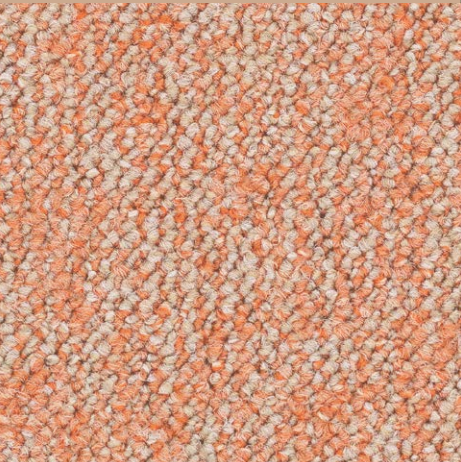
ESSENCE ROOTS

With an invitingly irregular, organic design, Roots combines a neutral base and accent colour to evoke the appearance of patterns in nature. Available in 12 colourways for serene, softly-textured spaces.

1. PURE 4422
2. ROOTS 2085
3. PURE 7802
4. PURE 2084
5. ROOTS 2032
6. PURE 2031

ESSENCE ELEMENTS





ESSENCE ELEMENTS

PURE 2084
ROOTS 2085
ROOTS 2032

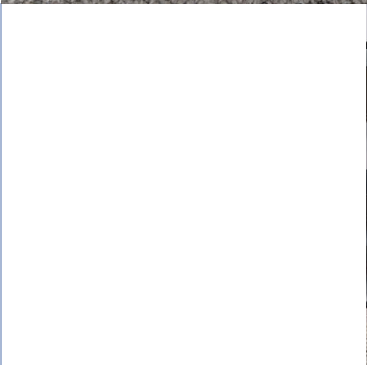
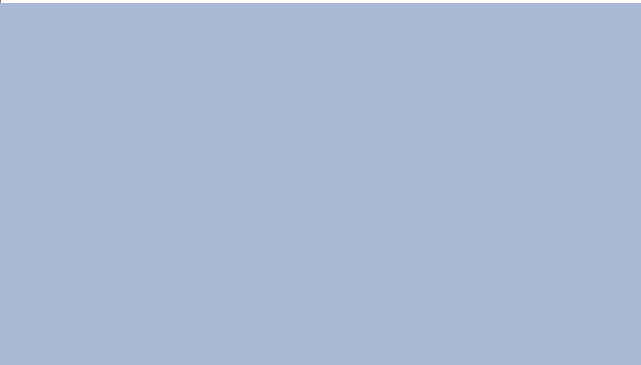
PURE, ROOTS & TRACES

ESSENCE TRACES

Featuring a subtle, organic stripe, these 6 colour options are made with a combination of 3 plain, tonal Pure colours. Offering spatial depth and definition, Traces will combine beautifully with the entire DESSO Essence Elements family.



1. PURE 9850
2. TRACES 9946
3. PURE 2087
4. PURE 8912
5. PURE 9022
6. PURE 9512
7. TRACES 9105
8. ROOTS 2088



ESSENCE ELEMENTS

- PURE 9850
- PURE 2087
- PURE 9104
- PURE 9512
- TRACES 9946
- TRACES 9105



PURE, ROOTS & TRACES

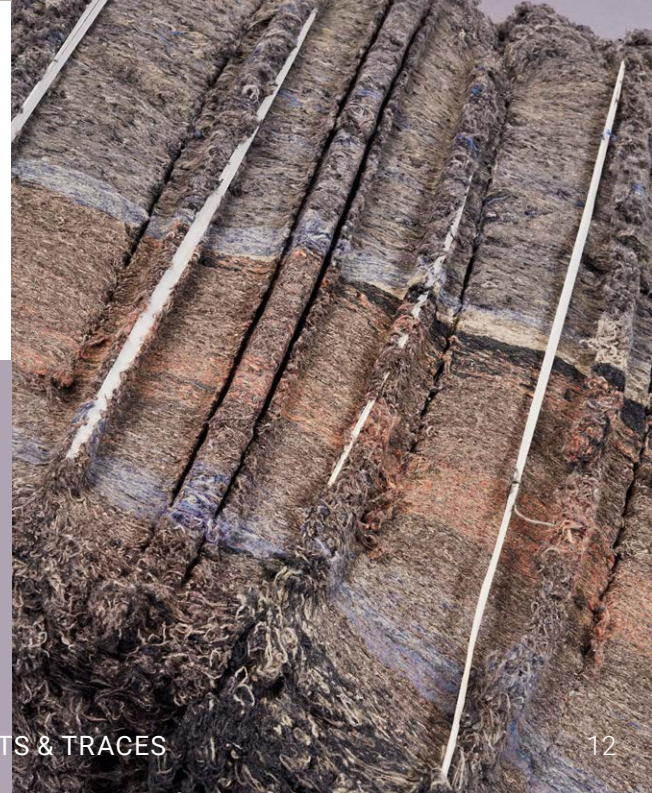


OUR COMMITMENT TO SUSTAINABILITY

REDUCING OUR IMPACT

Always working to reduce our impact on the planet while maintaining affordability, we recognise not all our customers can currently invest in our most sustainable material innovations. DESSO Essence Elements comes as standard with our affordable ProBase backing. While not fully circular, the components can be collected via our network of ReStart partners and recycled in our carpet recycling centre. Upgrading to our EcoBase carpet tile backing ensures the collection becomes fully recyclable and Cradle to Cradle® Silver level certified with a low circular carbon footprint.*

* According to the Environmental Product Declaration (EPD) S-P-05896 - DESSO Carpet Tiles, 0% recycled PA6 + EcoBase externally verified by Bureau Veritas, based on the total carbon footprint (Modules A-D) with a closed loop circular recycling scenario.





RESTART®



Through our take-back and recycling programme, ReStart, we will collect your used carpet tiles and take them to our carpet recycling centre to separate the two principal components. The yarn is regenerated into high-quality yarn for new carpet tiles, while the ProBase backing is co-processed in the cement industry. For EcoBase backing upgrades, we can fully recycle the total carpet tile with no loss of quality.

ESSENCE ELEMENTS – PURE

PLEASE SEE SAMPLE CARD FOR MATCHING DESSO PURE COLOURS



AD07 1510
712128002

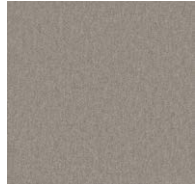
AD07 2031
712128003

AD07 2911
712128007

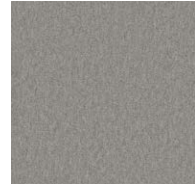
AD07 9111
712128023

CLICK [HERE](#) TO
DOWNLOAD IN
3DWAREHOUSE

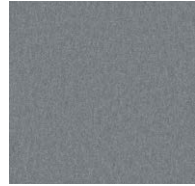
CLICK [HERE](#) TO
DOWNLOAD IN
PCONPLANNER



AD07 9526
712128025



AD07 9044
712128020



AD07 8915
712128018



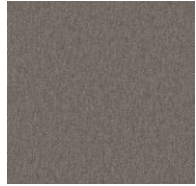
AD07 7925
712128015



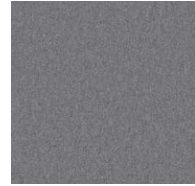
AD07 5411
712128009



AD07 2084
712128004



AD07 9104
712128022



AD07 9945
712128028



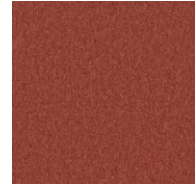
AD07 8823
712128016



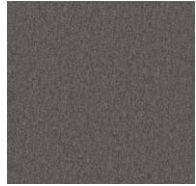
AD07 7802
712128013



AD07 6112
712128010



AD07 4422
712128008



AD07 9960
712128029



AD07 9512
712128024



AD07 8912
712128017



AD07 7283
712128012



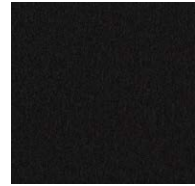
AD07 6321
712128011



AD07 2087
712128005



AD07 9531
712128026



AD07 9850
712128027



AD07 9022
712128019



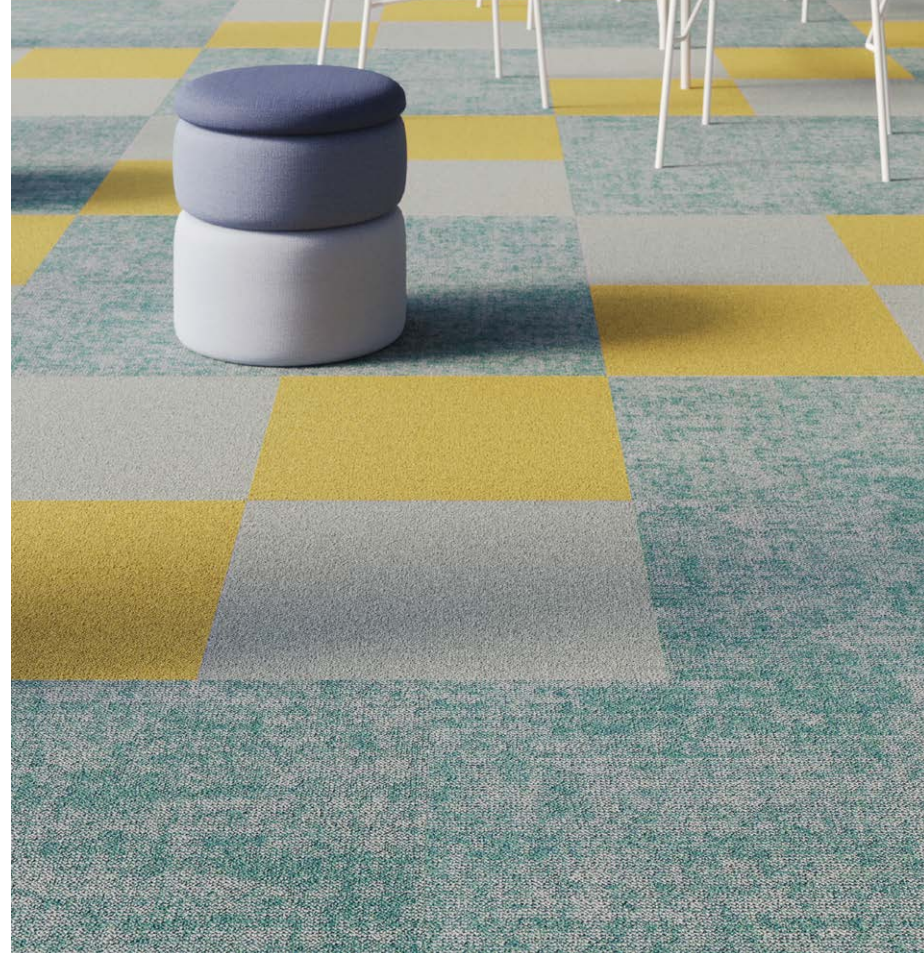
AD07 7841
712128014



AD07 9083
712128021



AD07 2121
712128006



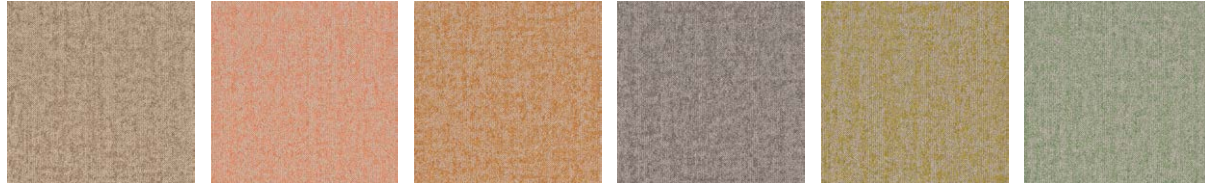
ESSENCE ELEMENTS

PURE 6112
PURE 9945
ROOTS 7803

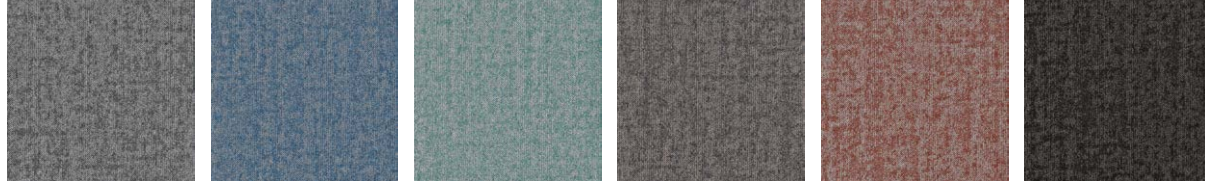
PURE, ROOTS & TRACES

ESSENCE ELEMENTS – ROOTS

PLEASE SEE SAMPLE CARD FOR MATCHING DESSO ROOTS COLOURS



AD08 2032 712137002 AD08 2085 712137003 AD08 5412 712137005 AD08 9961 712137013 AD08 6322 712137006 AD08 7284 712137007



AD08 9513 712137010 AD08 8913 712137009 AD08 7803 712137008 AD08 9532 712137011 AD08 2088 712137004 AD08 9851 712137012



CLICK [HERE](#) TO
DOWNLOAD IN
PCONPLANNER

CLICK [HERE](#) TO
DOWNLOAD IN
3DWAREHOUSE

ESSENCE ELEMENTS

PURE 2084
ROOTS 2032

PURE, ROOTS & TRACES

ESSENCE ELEMENTS – TRACES

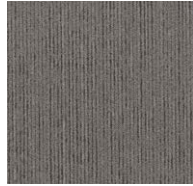
PLEASE SEE SAMPLE CARD FOR MATCHING DESSO TRACES COLOURS



AD09 9527
712146005



AD09 9528
712146006



AD09 9946
712146007



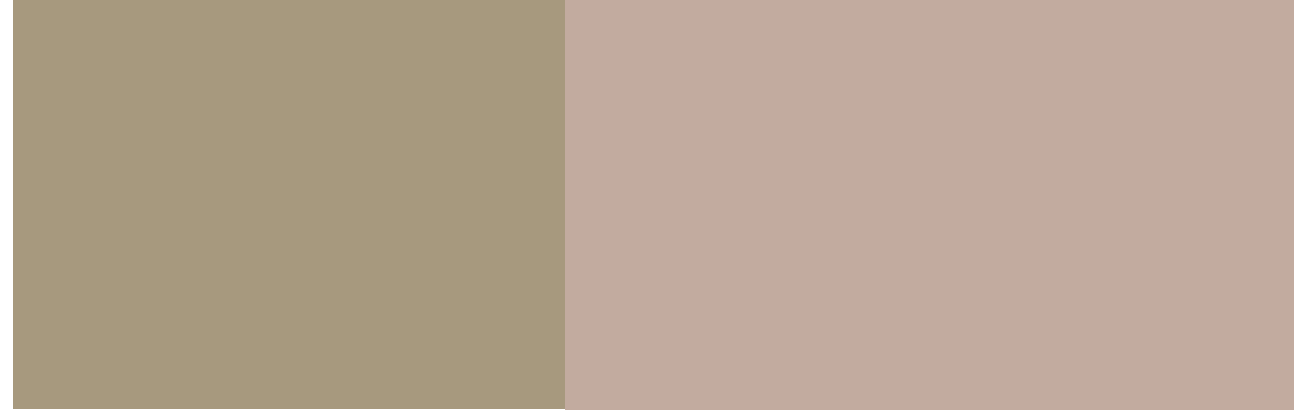
AD09 1511
712146002



AD09 9105
712146003



AD09 9112
712146004



CLICK [HERE](#) TO
DOWNLOAD IN
PCONPLANNER

CLICK [HERE](#) TO
DOWNLOAD IN
3DWAREHOUSE

ESSENCE ELEMENTS

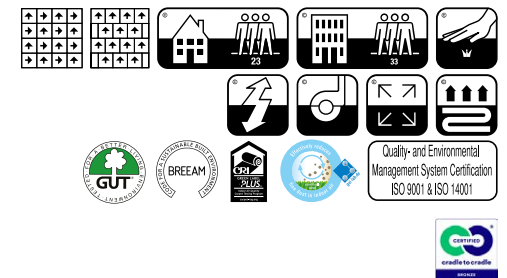
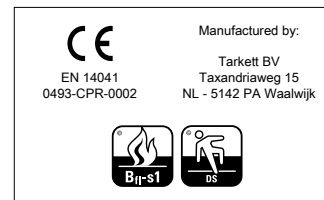
PURE 7925
PURE 1510
TRACES 1511

PURE, ROOTS & TRACES

TECHNICAL SPECIFICATIONS

ESSENCE PURE

Type of manufacture	ISO 2424		Tufted 1/10 "					
Aspect	ISO 2424		Loop pile					
Dye method			Solution dyed					
Dimension	EN ISO 24342	cm x cm	50 x 50 / 19,68" x 19,68" (20 tiles per box)					
Primary backing	ISO 2424		Polyester fleece					
Secondary backing	ISO 2424		ProBase - modified bitumen.					
Pile fibre composition	ISO 2424		BCF Polyamide 6					
Total thickness	ISO 1765	mm	6.0	inch	0.2			
Effective pile thickness	ISO 1766	mm	2.7	inch	0.11			
Total mass	ISO 8543	g/m ²	3900	oz/yd ²	115.1			
Total pile mass	ISO 2424	g/m ²	500	oz/yd ²	14.8			
Effective pile mass	ISO 8543	g/m ²	325	oz/yd ²	9.6			
Pile density	ISO 8543	g/cm ³	0.120	lb/in ³	0.0043			
Number of tufts	ISO 1763	/dm ²	1580	/yd ²	132104			
Stroll test	ISO 6356	kV	≤ 2,0					
Vertical resistance	ISO 10965	Ohm	-					
Horizontal resistance	ISO 10965	Ohm	-					
Use classification	EN 1307		33 Commercial - heavy use					
Luxury rating	EN 1307		LC 1					
Dimensional stability	EN 986	%	≤ 0,2					
Impact sound reduction ΔL_w	ISO 10140	dB	26					
Sound absorption	ISO 354	Freq. Hz	125	250	500	1000	2000	4000
		α_s	0.01	0.01	0.05	0.17	0.29	0.31
Noise reduction	ISO 354	α_w	0.15					
Thermal resistance	ISO 8302	m ² .K/W	0.062					
Flammability	EN 13501-1		Bfl - s1 (loose laid tested)					
Prodis - GUT	www.pro-dis.info							



DESSO flooring products are to be installed in full accordance with Tarkett's installation instructions and recognized trade standards. An effective, regular cleaning and maintenance program is vital for retaining a high appearance level. DESSO flooring products should only be used as floorcoverings. Note: Tarkett reserves the right to change this specification without prior notice; changes are subject to normal production tolerances. For the latest versions of the technical specifications, visit www.tarkett.com

EN-20230710

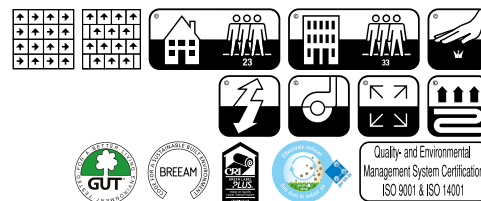
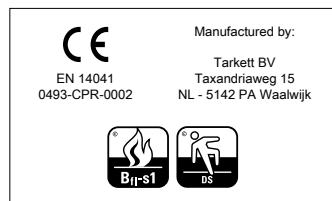
Tarkett BV
Taxandriaweg 15
NL-5142 PA Waalwijk



Type of manufacture	ISO 2424	Tufted 1/10 "						
Aspect	ISO 2424	Structured loop pile						
Dye method	Solution dyed							
Dimension	EN ISO 24342	cm x cm	50 x 50 / 19,68" x 19,68"			(20 tiles per box)		
Primary backing	ISO 2424	Polyester fleece						
Secondary backing	ISO 2424	ProBase - modified bitumen.						
Pile fibre composition	ISO 2424	BCF Polyamide 6						
Total thickness	ISO 1765	mm	6.5	inch	0.3			
Effective pile thickness	ISO 1766	mm	3.4	inch	0.13			
Total mass	ISO 8543	g/m ²	4050	oz/yd ²	119.5			
Total pile mass	ISO 2424	g/m ²	580	oz/yd ²	17.1			
Effective pile mass	ISO 8543	g/m ²	380	oz/yd ²	11.2			
Pile density	ISO 8543	g/cm ³	0.112	lb/in ³	0.0040			
Number of tufts	ISO 1763	/dm ²	1580	/yd ²	132104			
Stroll test	ISO 6356	kV	≤ 2,0					
Vertical resistance	ISO 10965	Ohm	-					
Horizontal resistance	ISO 10965	Ohm	-					
Use classification	EN 1307	33 Commercial - heavy use						
Luxury rating	EN 1307	LC 1						
Dimensional stability	EN 986	%	≤ 0,2					
Impact sound reduction ΔL _w	ISO 10140	dB	25					
Sound absorption	ISO 354	Freq. Hz	125	250	500	1000	2000	4000
		α _s	0.00	0.02	0.06	0.17	0.29	0.37
Noise reduction	ISO 354	α _w	0.20					
Thermal resistance	ISO 8302	m ² .K/W	0.078					
Flammability	EN 13501-1	Bfl - s1 (loose laid tested)						
Prodis - GUT	www.pro-dis.info							

TECHNICAL SPECIFICATIONS

ESSENCE ROOTS



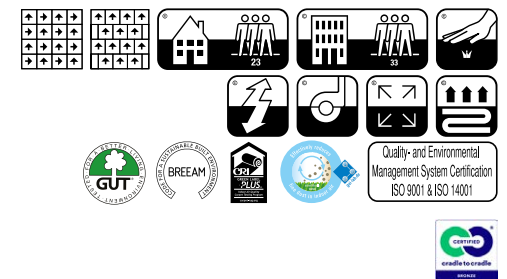
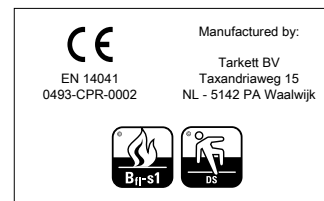
DESSO flooring products are to be installed in full accordance with Tarkett's installation instructions and recognized trade standards. An effective, regular cleaning and maintenance program is vital for retaining a high appearance level. DESSO flooring products should only be used as floorcoverings. Note: Tarkett reserves the right to change this specification without prior notice; changes are subject to normal production tolerances. For the latest versions of the technical specifications, visit www.tarkett.com

EN-20230710

TECHNICAL SPECIFICATIONS

ESSENCE TRACES

Type of manufacture	ISO 2424	Tufted 1/10 "						
Aspect	ISO 2424	Structured loop pile						
Dye method	Solution dyed							
Dimension	EN ISO 24342	cm x cm	50 x 50 / 19,68" x 19,68"			(20 tiles per box)		
Primary backing	ISO 2424	Polyester fleece						
Secondary backing	ISO 2424	ProBase - modified bitumen.						
Pile fibre composition	ISO 2424	BCF Polyamide 6						
Total thickness	ISO 1765	mm	6.0	inch	0.2			
Effective pile thickness	ISO 1766	mm	2.6	inch	0.10			
Total mass	ISO 8543	g/m ²	4050	oz/yd ²	119.5			
Total pile mass	ISO 2424	g/m ²	580	oz/yd ²	17.1			
Effective pile mass	ISO 8543	g/m ²	315	oz/yd ²	9.3			
Pile density	ISO 8543	g/cm ³	0.121	lb/in ³	0.0044			
Number of tufts	ISO 1763	/dm ²	1580	/yd ²	132104			
Stroll test	ISO 6356	kV	≤ 2,0					
Vertical resistance	ISO 10965	Ohm	-					
Horizontal resistance	ISO 10965	Ohm	-					
Use classification	EN 1307	33 Commercial - heavy use						
Luxury rating	EN 1307	LC 1						
Dimensional stability	EN 986	%	≤ 0,2					
Impact sound reduction ΔL_w	ISO 10140	dB	26					
Sound absorption	ISO 354	Freq. Hz	125	250	500	1000	2000	4000
		α_s	0.00	0.02	0.06	0.17	0.29	0.37
Noise reduction	ISO 354	α_w	0.20					
Thermal resistance	ISO 8302	m ² .K/W	0.062					
Flammability	EN 13501-1	Bfl - s1 (loose laid tested)						
Prodis - GUT	www.pro-dis.info							



DESSO flooring products are to be installed in full accordance with Tarkett's installation instructions and recognized trade standards. An effective, regular cleaning and maintenance program is vital for retaining a high appearance level. DESSO flooring products should only be used as floorcoverings. Note: Tarkett reserves the right to change this specification without prior notice; changes are subject to normal production tolerances. For the latest versions of the technical specifications, visit www.tarkett.com

EN-20230710

Tarkett BV
Taxandriaweg 15
NL-5142 PA Waalwijk





Tarkett B.V.

Taxandriaweg 15
5142 PA Waalwijk
The Netherlands

TEL. +31(0)416 684100
desso@tarkett.com
www.tarkett.com

Tarkett Human-Conscious Design®

Tarkett Human-Conscious Design® is our pledge to stand with present and future generations.

To create flooring and sports surfaces that are good for people and for the planet. And to do it every day.

We deliver on this through the synergy of three commitments:

- 1 Deep human understanding
- 2 Conscious choices. For people and planet
- 3 With you. Every step of the way

With a history of more than 140 years, Tarkett is a worldwide leader in innovative and sustainable flooring and sports surface solutions, generating net sales of €3.4 billion in 2022. The Group employs 12,000 employees and has 25 R&D centres, 8 recycling centres and 34 production sites. Tarkett creates and manufactures solutions for hospitals, schools, housing, hotels, offices, stores and sports fields, serving customers in over 100 countries. To build “The Way to Better Floors,” the Group is committed to circular economy and sustainability, in line with its Tarkett Human-Conscious Design® approach. Tarkett is listed on the Euronext regulated market (compartment B, ISIN: FR0004188670, ticker: TKTT)

© Tarkett, August 2023

Descriptions, colours and specifications are subject to change without notice. Tarkett is not responsible for typographical/photographical errors. Actual product may differ from illustration. All rights reserved. Reproduction in whole or in part is prohibited without the prior written consent of the copyright owner. The information presented in this document does not form part of any quotation or contract, is believed to be accurate and reliable and may be changed without notice. No liability will be accepted by the publisher for any consequence of its use. Publication thereof does not convey nor imply any license under patent- or other industrial or intellectual property rights. In case of doubt or differences of interpretation, the English version shall prevail over all other language versions.

Installation method used in all photography: bricks



COVER:

PURE 9850

PURE 2087

PURE 9104

TRACES 9946

TRACES 9105